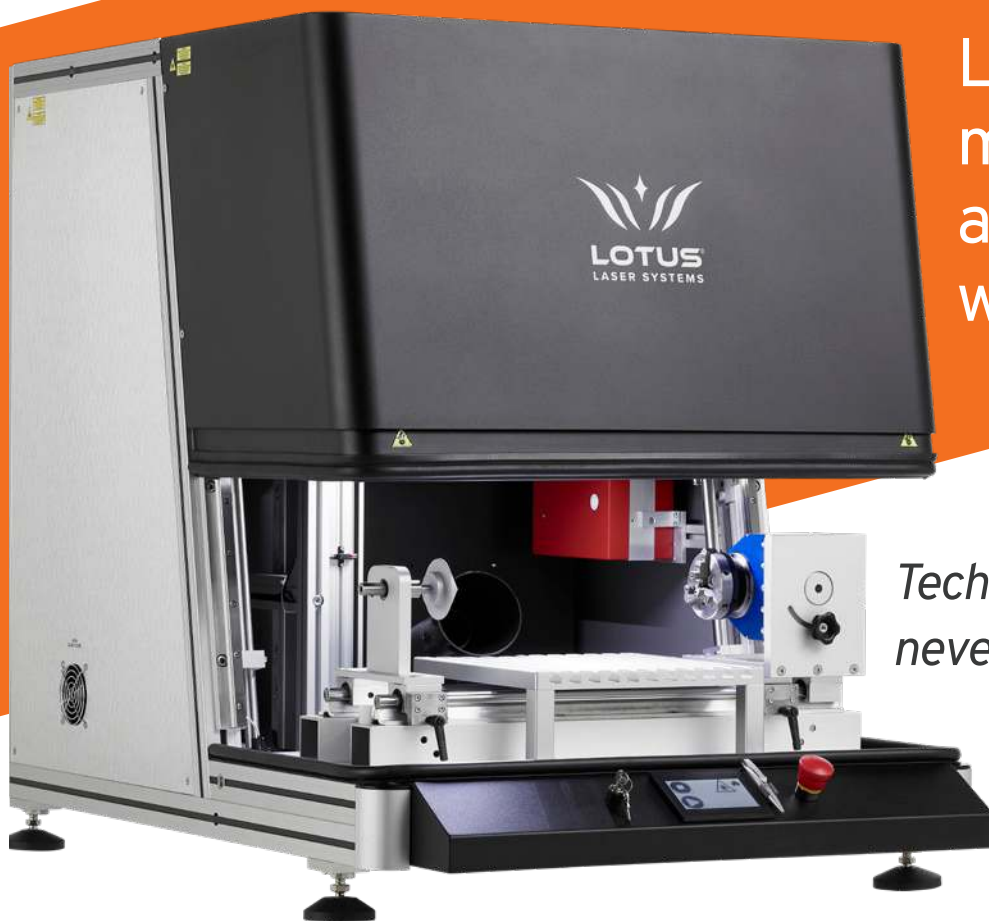




# META-C

Laser engraving,  
marking  
and cutting  
workstation



*Technology this good has  
never been so affordable*



[WWW.LOTUSLASER.COM](http://WWW.LOTUSLASER.COM)

## What is Meta-C?

Available with a very wide range of laser wavelengths, output powers, varying beam characteristics and packed with performance enhancing features Meta-C is our flagship laser engraving, marking and cutting workstation.



Meta-C is a powerhouse of a machine delivering the best performance and functionality in its class.

All of the key components within Meta-C are sourced from European suppliers.

Meta-C also has excellent eco credentials being made from materials and components that are carefully selected for energy efficiency and recyclability.

### GET IN TOUCH

Call +44 (0) 1268 567 540 Email [sales@lotuslaser.com](mailto:sales@lotuslaser.com) Visit [www.lotuslaser.com](http://www.lotuslaser.com)

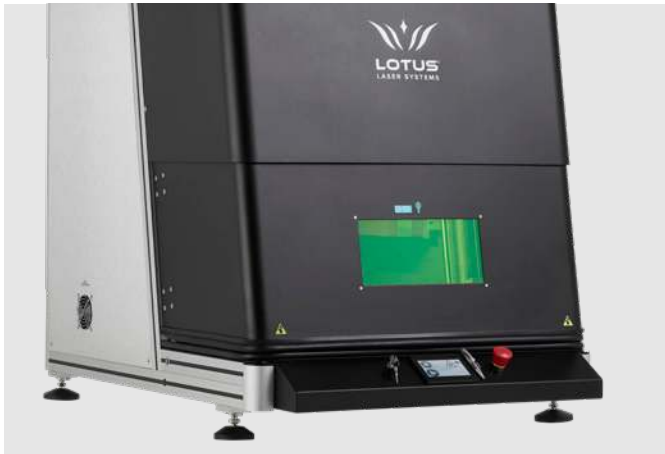
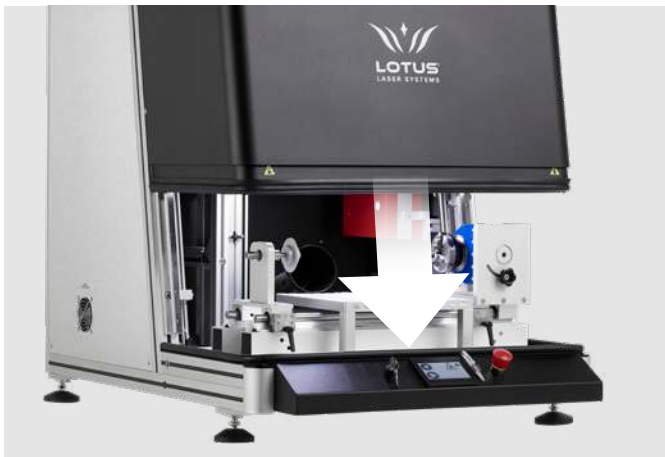
  /LotusLasers  /LotusLaserSystems



## Standard Features

### WIDE RANGE OF LASER OPTIONS

Choosing the right source for the core application is critical to success. Meta-C can be fitted with a single laser source of 10.6µm (CO2), 355nm (UV) as well as 1µm Fiber Q-Switched or MOPA options with a wide range of output power and beam characteristics.



### ▲ PNEUMATIC ACCESS PANEL

The access panel of Meta-C is pneumatically actuated to provide for next to zero maintenance, a long working life and hands free operation. The cabinet design is space saving by retracting the lower section into the upper section and allows for a full 180 degree access for part loading.

### INDUSTRIAL GRADE ELECTRONICS

Meta-C incorporates electronics of an industrial grade the majority of which are made in Germany. A Siemens PLC controls all electronic processes as well as monitoring the system for faults at a component level. There is a touch screen Human Machine Interface (HMI), Phoenix Contact power supplies and dual channel safety circuitry as standard. 100% of the cabling for Meta-C is made in-house at our UK factory.



### ▲ EXTERNAL DEVICE CONNECTIVITY

The PLC allows for an almost unlimited range of external device connectivity such as conveyor feeds, robots, etc. Therefore, Meta-C is well suited to integration within an automated part handling process.

### GET IN TOUCH

Call +44 (0) 1268 567 540 Email [sales@lotuslaser.com](mailto:sales@lotuslaser.com) Visit [www.lotuslaser.com](http://www.lotuslaser.com)

  /LotusLasers  /LotusLaserSystems



## Standard Features



### ▲ CUSTOMISABLE SOFTWARE

Lotus Mark is recognised as one of the most powerful and functional laser marking software available, however, for some installations a bespoke software solution is necessary. Meta-C software can be customised at extra cost to suit the most demanding of bespoke requirements.



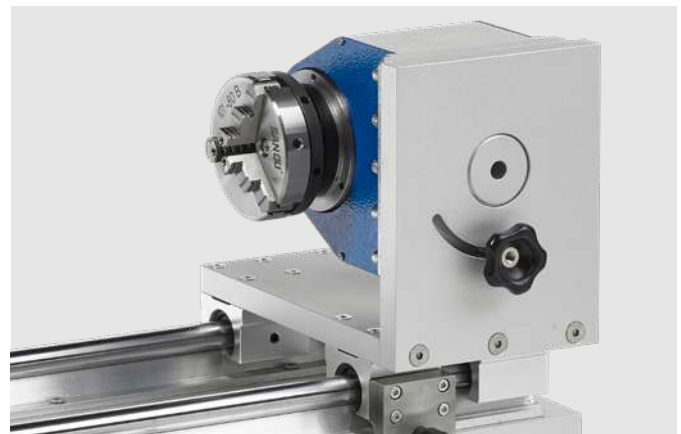
### ▲ MK3 ROTARY DEVICE

The MK3 rotary device features a high resolution 30:1 gear ratio, a keyless chuck with a spring-loaded tail stock and a pair of cones to handle marking of most cylindrical objects. This device stays permanently fixed to the base plate and is moved in/out of the marking field when required along heavy duty guide rails. Therefore no alignment is necessary when switching between rotary and T-slot table marking, which saves a lot of time.



### ▲ REMOVABLE T-SLOT TABLE

The T-slot table can be removed/replaced quickly and accurately without a need for tools. The T-slot table can be fitted over the rotary device.



### ▲ PROGRAMMABLE Z AXIS

We have redesigned the Z axis of Meta-C to provide for a longer Z travel distance and less weight. Another improvement is the switch from physical to optical sensors, which can be easily adjusted if required.

## GET IN TOUCH

Call +44 (0) 1268 567 540 Email [sales@lotuslaser.com](mailto:sales@lotuslaser.com) Visit [www.lotuslaser.com](http://www.lotuslaser.com)

  /LotusLasers  /LotusLaserSystems



## General Technical Data

WEIGHT & DIMENSIONS	LASER SOURCE			
	1µm Q-SWITCH	1µm MOPA	10.6µm	355nm
Width	790mm	790mm	790mm	790mm
Depth	1160mm	1160mm	1520mm	1160mm
Height	1030mm	1030mm	1030mm	1030mm
Weight	110kg	110kg	130kg	120kg
Laser Power W	20, 30, 50, 100	20, 30, 50, 70, 100	50, 75, 100	3, 5
Cooling	Air	Air	Air	Water

### POWER REQUIREMENT

Single phase auto switching	
230 VAC 50Hz	Consumption specific to laser source
120 VAC 60Hz	
Air Cooled	

### COMPUTER

Operating System	Windows
Connection	USB max 2.5m

### AIR REQUIREMENTS (FOR PNEUMATIC DOOR)

Connecting port	8mm female push-fit
Pressure	Regulated 4 bar max
Oil/Moisture	Must be removed
Flow negligible	Recommended receiver 24L

### MAXIMUM PART LOADING

With cabinet closed 700mm wide x 380mm deep

Lens / area	Z clearance to focal point at:		
	T-slot with legs	T-slot without legs	Base plate only
F330 / 220mm	72mm	162mm	182mm
F254 / 180mm	148mm	238mm	258mm
F163 / 110mm	239mm	329mm	349mm
F100 / 70mm	302mm	392mm	412mm

### MAXIMUM PART LOADING WITH ROTARY AXIS (OPTION)

X	350mm
Diameter	250mm
Weight	5kg

### SAFETY & SECURITY

Laser class	2
Emergency stop	Standard
Keyswitch maintenance (Class 4)	Standard
Laser safe viewing window	135x135mm
CE and RoHS	Compliant
FDA	Approved 1320021-000

### MISCELLANEOUS

T-slot size	300x300mm
External start button	Standard
External foot switch	Standard
Pneumatic door access	Standard
Z-axis programmable by software	Standard
Lotus mark control software	1 copy
Rotary axis with keyless chuck	Optional
3m Conveyor feed	Optional
Fume extraction	Mandatory - at extra cost depending on application

### WARRANTY (T&C APPLY)

Main system	2 years
Laser source	2 years
Labour	Variable by territory
Warranty extensions	Optional up to +3 years
Service Contract	Optional

### ENVIRONMENTAL REQUIREMENTS

Ambient temp. (min/max)	15°C to 30°C
Fume extraction rate	Apps dependant, seek advice
Protect from direct sunlight, vibration, high humidity, dampness, unstable power supply.	

